

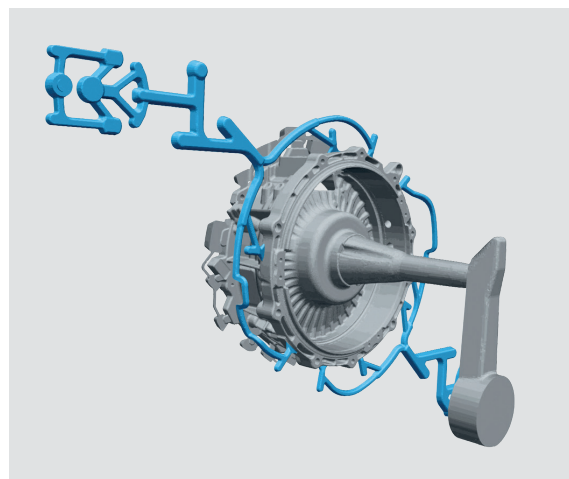
APPLICATION STUDY

The vacuum channel is the connection between the cavity and the vacuum device. It is important to calculate, dimension and design the right ratio between the vacuum gate and the vacuum channel. Additionally, the geometry of the vacuum channel will have to be adapted to airflow dynamics and overflow volume.

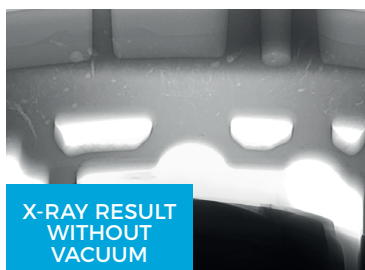
THE FONDAREX TEAM OFFERS TO REALISE COMPLETE STUDIES IN ORDER TO ENSURE THAT THE DIE CASTER GETS THE RIGHT SOLUTION.

To perform a vacuum application study, we require the casting data, information on the die (or project), gating system, the shot sleeve, the process and die casting machine size and model. Further info on the process does help as well.

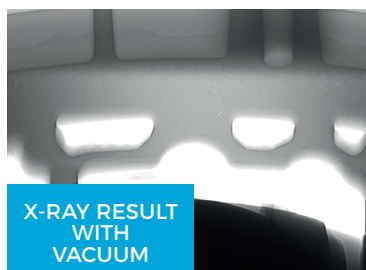
As a result, we work out the complete design of the vacuum gate, vacuum channel, and the placement of the chill bloc or vacuum valve in the mold. Our recommendation on the suitable vacuum equipment according to the application and requirements comes with the solution as well.



Vacuum channels developed by Fondarex (highlighted in blue) on a Bosch flange housing for Porsche Panamera E-Hybrid



X-RAY RESULT
WITHOUT
VACUUM



X-RAY RESULT
WITH
VACUUM

For further information, contact our team members at sales@fondarex.com or application@fondarex.com